

NOTE:
AN ASTERISK (*) ON LOTS (LOTS 107-117 & 131-143) INDICATE MATURE WOODLANDS MAYBE PRESENT. TREES GREATER THAN EIGHT INCHES (8") CALIPER OUTSIDE PRIVATE RIGHTS OF WAY, BUILDING FOOTPRINT AND DRIVEWAYS MUST BE APPROVED BY WILLIAMSON COUNTY PLANNING COMMISSION PRIOR TO REMOVAL.

PLAT PREPARATION
CLIFTON & KING LLC
234 FIRST AVE. SOUTH
FRANKLIN, TN. 37064
PHONE: (615) 591-9885

FIELD STAKING PERFORMED BY
CROUCH ENGINEERING PC
428 WILSON PIKE CIRCLE
BRENTWOOD, TN. 37027
PHONE: (615) 791-0630

CLIFTON & KING, LLC

LAND PLANNING
SITE ENGINEERING

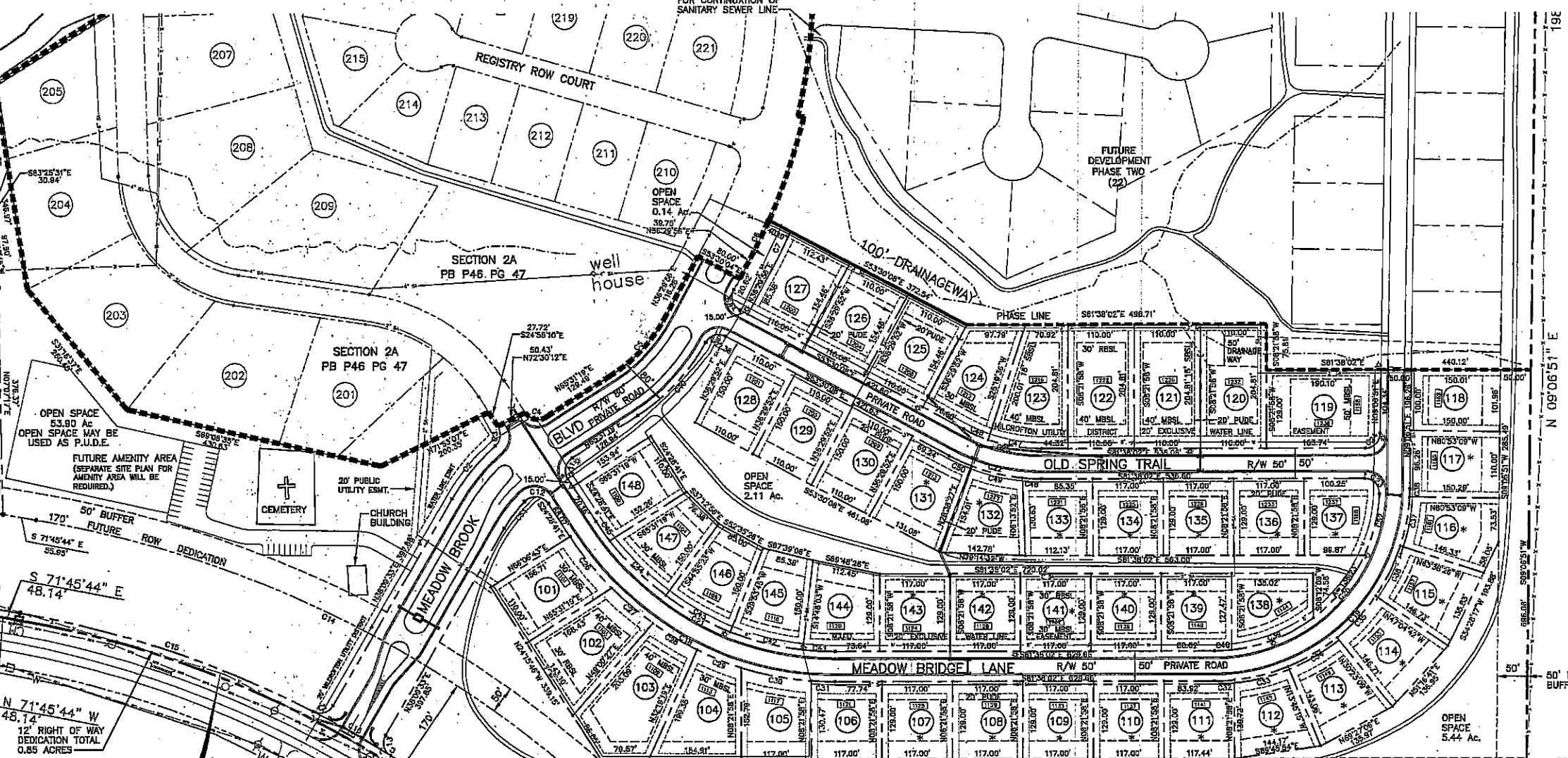
234 FIRST AVENUE SOUTH
FRANKLIN, TN. 37064
PHONE: (615) 591-9885
FAX: (615) 591-9815

LOT AREA

LOT	Sq. Ft.	Acres
101	17,540	0.402
102	20,992	0.481
103	26,873	0.614
104	19,681	0.451
105	18,301	0.420
106	15,112	0.346
107	15,093	0.346
108	15,093	0.346
109	15,093	0.346
110	15,093	0.346
111	15,189	0.348
112	15,616	0.358
113	16,266	0.373
114	16,571	0.380
115	16,423	0.377
116	16,313	0.374
117	16,501	0.378
118	15,146	0.347
119	24,284	0.557
120	22,529	0.517
121	22,529	0.517
122	22,529	0.517
123	20,855	0.479
124	18,860	0.433
125	16,990	0.390
126	16,990	0.390
127	17,046	0.391
128	16,500	0.378
129	16,500	0.378
130	16,500	0.378
131	18,144	0.416
132	15,454	0.354
133	15,109	0.346
134	15,093	0.346
135	15,093	0.346
136	15,093	0.346
137	15,080	0.346
138	14,602	0.335
139	15,078	0.346
140	15,093	0.346
141	15,093	0.346
142	15,967	0.365
143	15,093	0.346
144	16,717	0.383
145	15,933	0.364
146	15,954	0.364
147	15,755	0.361
148	15,911	0.368

CURVE TABLE

CD	DELTA	RADIUS	ARC	CHORD	CB
C1	87°33'22"	25.00'	38.20'	34.26'	N81°56'14"E
C2	18°40'42"	350.00'	114.10'	113.80'	N47°29'54"E
C3	4°48'28"	23.00'	35.72'	32.74'	N17°58'03"E
C4	85°30'31"	26.00'	38.06'	35.20'	S89°43'25"E
C5	28°01'23"	260.00'	131.70'	130.30'	N5°00'57"E
C6	4°12'51"	840.00'	69.14'	69.12'	N3°42'30"E
C7	4°02'31"	880.00'	69.14'	69.12'	N3°42'40"E
C8	80°50'04"	25.00'	38.27'	35.36'	N08°30'08"W
C9	89°18'00"	275.00'	39.14'	38.74'	S81°20'22"W
C10	28°20'27"	340.00'	168.18'	168.47'	S51°21'05"W
C11	90°00'00"	25.00'	38.27'	35.36'	S70°31'18"W
C12	10°24'55"	25.00'	45.56'	39.51'	S78°41'08"E
C13	87°28'41"	25.00'	38.15'	34.55'	S05°33'19"E
C14	37°17'04"	1038.00'	107.47'	107.45'	S49°39'42"E
C15	4°28'39"	1889.02'	816.22'	813.23'	S83°01'24"E
C16	5°00'57"	1889.02'	147.88'	147.81'	S51°48'35"E
C17	3°22'11"	1889.02'	69.33'	69.32'	S47°35'02"E
C18	87°08'21"	225.00'	223.72'	602.27'	S53°03'22"E
C19	85°16'07"	325.00'	308.27'	456.81'	N83°44'24"E
C20	87°14'55"	275.00'	418.78'	378.46'	N84°44'50"E
C21	57°08'21"	475.00'	473.54'	484.44'	S83°03'22"E
C22	28°07'55"	325.00'	158.57'	157.97'	S87°34'05"E
C23	82°49'03"	25.00'	40.47'	36.16'	S35°19'30"E
C24	85°16'07"	225.00'	223.72'	58.24'	N83°44'24"E
C25	28°07'55"	325.00'	158.57'	157.97'	S87°34'05"E
C26	11°54'52"	525.00'	106.17'	108.97'	S30°28'07"E
C27	9°44'38"	525.00'	89.28'	86.17'	S41°19'51"E
C28	9°29'17"	525.00'	86.94'	88.84'	S20°32'47"E
C29	8°41'40"	525.00'	79.87'	79.89'	S09°58'16"E
C30	1°01'38"	525.00'	112.37'	119.11'	N70°49'55"E
C31	4°17'18"	525.00'	39.30'	39.28'	S79°29'23"E
C32	5°56'13"	325.00'	33.88'	33.97'	N84°35'39"W
C33	18°11'59"	325.00'	81.89'	81.98'	N84°20'45"E
C34	18°37'54"	325.00'	84.34'	84.01'	N87°55'48"E
C35	19°41'33"	325.00'	84.89'	83.30'	N81°16'08"E
C36	18°33'44"	325.00'	83.65'	83.62'	N34°28'28"E
C37	14°46'22"	325.00'	84.08'	83.85'	N18°56'52"E
C38	2°28'22"	325.00'	13.74'	13.74'	S10°16'31"W
C39	30°37'00"	275.00'	148.95'	148.21'	S77°00'27"W
C40	6°03'00"	275.00'	29.04'	29.02'	S94°39'32"E
C41	8°28'58"	475.00'	83.35'	83.32'	N78°25'00"E
C42	15°05'41"	475.00'	128.14'	124.76'	N87°38'08"W
C43	15°01'38"	475.00'	124.58'	124.22'	N82°35'28"W
C44	15°47'14"	475.00'	130.88'	130.47'	N87°11'00"W
C45	4°48'43"	475.00'	39.88'	39.85'	S26°53'02"E
C46	8°24'38"	275.00'	45.18'	45.11'	S08°12'27"E
C47	18°43'16"	275.00'	89.88'	89.49'	N72°16'23"W
C48	5°35'16"	325.00'	31.68'	31.65'	N78°00'26"W
C49	15°20'08"	325.00'	86.95'	86.73'	N88°22'43"W
C50	7°12'51"	325.00'	40.88'	40.88'	S57°08'23"E
C51	12°59'51"	250.00'	58.49'	58.37'	S44°37'88"E
C52	22°11'53"	275.00'	100.54'	105.85'	S22°12'56"E



CURVE DATA
Delta = 25°17'21"
R = 1677.02'
L = 740.20'
Ch = 734.21'
N 59°07'03"W

09/18/2007 - 10:40:10 AM
07042680
1 PLS LAL-PLAT
MATCH: 18788
PLAT BOOK: P48
PAGE: 78
REG FEE: 60.00
DP FEE: 60.00
TOTAL: 120.00
STATE OF TENNESSEE, WILLIAMSON COUNTY
SADIE WADE

P48/78B

REVISED FINAL PLAT
KING'S CHAPEL SUBDIVISION
SECTION ONE
A PLANNED RESOURCE CONSERVATION DEVELOPMENT
ARRINGTON WILLIAMSON COUNTY, TENNESSEE



HANG ROCK, LLC
1413 PLYMOUTH DRIVE
BRENTWOOD, TN. 37027
PHONE: (615) 370-4432
FAX:

DATE: 06/20/07
REVISIONS:
06/28/07